

1) Housing, 2) Sensing surface, 3) Cover, 4) Potentiometer, 5) Function indicator yellow, 6) Power indicator green



### Basic features

<b>Additional features</b>	Electrically conductive media Foam and residue compensation
<b>Approval/Conformity</b>	CE UKCA WEEE
<b>Basic standard</b>	IEC 60947-5-2
<b>Scope of delivery</b>	Nut + O-ring Ø10x2
<b>Sensitivity</b>	media-dependent, adjustable
<b>Series</b>	S44

### Display/Operation

<b>Function indicator</b>	yes
<b>Power indicator</b>	yes

### Electrical connection

<b>Cable diameter D</b>	4.70 mm
<b>Cable length L</b>	0.05 m
<b>Conductor cross-section</b>	0.34 mm <sup>2</sup>
<b>Connection</b>	M8x1-Male, 3-pin
<b>Number of conductors</b>	3
<b>Polarity reversal protected</b>	yes
<b>Protection against device mix-ups</b>	yes
<b>Short-circuit protection</b>	yes

### Electrical data

<b>Load capacitance max. at U<sub>e</sub></b>	10 µF
<b>No-load current I<sub>o</sub> max. at U<sub>e</sub></b>	11.0 mA
<b>Operating voltage U<sub>b</sub></b>	10...30 VDC
<b>Rated insulation voltage U<sub>i</sub></b>	75 V DC
<b>Rated operating current I<sub>e</sub></b>	50 mA
<b>Rated operating voltage U<sub>e</sub> DC</b>	24 V
<b>Ready delay t<sub>v</sub> max.</b>	100 ms
<b>Ripple max. (% of U<sub>e</sub>)</b>	10 %
<b>Switching frequency</b>	10 Hz
<b>Utilization category</b>	DC -13
<b>Voltage drop static max.</b>	2 V

### Environmental conditions

<b>Ambient temperature</b>	-5...105 °C
<b>Contamination scale</b>	3
<b>IP rating</b>	IP67, sensing surface: IP68 10 bar

### Functional safety

<b>MTTF (40 °C)</b>	250 a
---------------------	-------

### Interface

<b>Switching output</b>	PNP/NPN NO/NC codable
-------------------------	-----------------------

Capacitive Sensors  
**BCS S44KK01-GPCFNG-EP00,05-GS49**  
**Order Code: BCS015K**



**Material**

Cover material	PA
Housing material	PEEK
Material jacket	PUR
Material sensing surface	PEEK

**Mechanical data**

Dimension	Ø 12 x 62.5 mm
Installation	non-flush
Size	M12x1
Thread (A)	M12x1
Tightening torque	1.5 Nm

**Remarks**

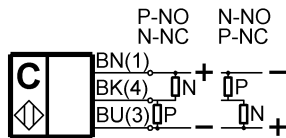
The push-pull switching outputs must not be connected in parallel.  
 The potentiometer does not have a fixed stop, but can be turned endlessly without destroying anything.  
 If no change in the switching signal is detected, the potentiometer should be turned forwards or backwards until a signal change occurs at the output.  
 For more information about MTTF and B10d see MTTF / B10d Certificate

Indication of the MTTF- / B10d value does not represent a binding composition and/or life expectancy assurance; these are simply experiential values with no warranty implications. These declared values also do not extend the expiration period for defect claims or affect it in any way.

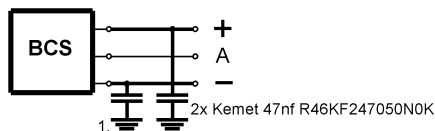
**Connector Drawings**



**Wiring Diagrams**



**Installation remarks**



1) Machine GND